

## MISSION 001: TESTFLIGHT 1

# PUBLIC INFORMATION ON VIEWING AND SAFETY

The information contained in this document is current as of **5 May 2025**. For the latest information, please check our website: <https://www.gspace.com/missions>

Australian launch services company, Gilmour Space Technologies, is targeting to launch its inaugural TestFlight1 mission from the Bowen Orbital Spaceport (BOS) in north Queensland.

**This will be the maiden launch of Australia's first sovereign-made orbital rocket**, and the first orbital launch attempt from Australia in over 50 years.



## WHEN IS THE LAUNCH?

The launch window for TestFlight1 is expected to open **No Earlier Than (NET) May 15, 2025**. However, do note that Gilmour Space cannot and does not guarantee the occurrence of a launch.

The timing and date of launches are contingent upon weather conditions and other factors, thus always subject to change.

## WHERE CAN I VIEW THE LAUNCH?

Given the unpredictable nature of first rocket launches, **spectators are not encouraged for TestFlight1**. There is a high likelihood of delays or scrubs (e.g., due to weather conditions, unforeseen technical issues), which could last hours, days, or even weeks, making visitor planning extremely challenging.

More importantly, Safety will be our top priority:

- **Hazard Areas will be designated on land, water, and in the air** during launch periods.
- The launch site will not be visible from any publicly-accessible point during those times; and
- Gilmour Space will not be providing viewing areas for the public. Any potential spectators will need to make their own arrangements.

**Tips for Locals:** Local Bowen residents who still wish to view the launch attempt could consider these public locations.

### For Easy access and car parking:

1. Coral Beach
2. Grays Beach
3. Lions Park
4. Ethel Barker Park
5. Queens Beach
6. Yasso Point

### For elevated views:

1. Watertank Murals
2. Flagstaff Hill

Note: These areas will not be monitored by Gilmour Space; nor do we give any warranty as to the suitability of these sites for viewing the launch.

## WILL THERE BE A LIVESTREAM?

Unfortunately, we will not be able to support a livestream at this time. This will be Australia's first orbital launch attempt in over 50 years; and as both the launch vehicle and launch site operator, Gilmour Space will be working closely with authorities to ensure a safe and successful campaign. **We plan to release video footage after the launch.**

## OTHER FAQ's

### Will major roads be affected during launch?

Only Abbot Point Road will be affected on launch days during nominated times. Gilmour Space Launch Hazard Areas will not close or obstruct any other roads.(see *Hazard Areas: Road Access*).

### Will public buses and trains be affected?

No. Gilmour Space will not be requesting any changes to public transport.

### Will there be restrictions to Marine access?

Yes, Marine Hazard Areas will be declared for waters surrounding the launch area and along the rocket flight path (see *Hazard Areas: Marine Access*).

### Can I use a drone?

Gilmour Space will be establishing temporary restricted airspace around the launch site, and the use of drones in this area is strictly prohibited (see *Hazard Areas: Air Access*).

## HOW CAN I CONTACT GILMOUR SPACE?

For updates on the launch, follow Gilmour Space at [www.gspace.com/missions](https://www.gspace.com/missions)

[Facebook](#) | [Twitter](#) | [LinkedIn](#) | [Instagram](#)

Email: [info@gspace.com](mailto:info@gspace.com)

## MISSION 001: TESTFLIGHT 1

## PUBLIC INFORMATION ON VIEWING AND SAFETY

The information contained in this document is current as of 5 May 2025. For the latest information, please check our website: <https://www.gspace.com/missions>

## HAZARD AREAS

Safety is our highest priority at Gilmour Space. In consultation with the Australian Space Agency, Civil Aviation Safety Authority, Maritime Safety Queensland, and Queensland Police, **Hazard Areas will be activated in the air, on the water and over the ground.** Access to these areas will be restricted during the launch period.

## 1. ROAD ACCESS

Bowen Orbital Spaceport is located within the Abbot Point State Development Area, which is a secured and private site.

- **Temporary road closures will be in place on Abbot Point Road** for public safety during nominated times on launch days. These road closures have been developed in consultation with the port operator. All persons other than emergency services will be excluded from access to Abbot Point Road at the road closure points marked in *Figure 1*.
- Road closure will take effect from **about 30 minutes before launch**.

Gilmour Space is not requesting any other road closures and therefore expects no other roads will be affected by launch activities.

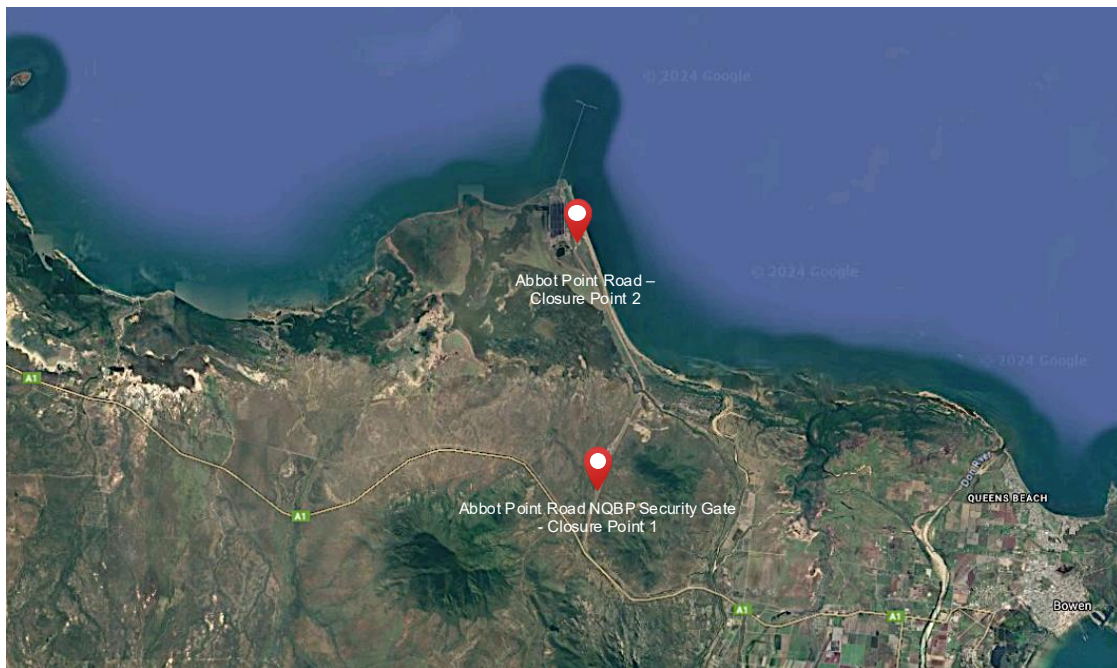


Figure 1 – Road closures at Abbot Point Road, Bowen

## MISSION 001: TESTFLIGHT 1

# PUBLIC INFORMATION ON VIEWING AND SAFETY

The information contained in this document is current as of **5 May 2025**. For the latest information, please check our website: <https://www.gspace.com/missions>

## HAZARD AREAS

### 2. MARINE ACCESS

To facilitate the safety of vessel navigation during launch activities, **Marine Hazard Areas will be declared for waters surrounding the launch area and along the rocket flightpath** (see Figures 2).

- Marine Hazard Areas will be communicated via Notice to Mariners, Coastal Warnings, NAVAREA X warnings, and Sécurité broadcasts at regular intervals during activation periods on Marine VHF Channels 12 and 16.
- Marine Safety Zones could be in place **around an hour before launch**.
- All marine craft should avoid these Marine Safety Zones while they are active.

#### MARINE LAUNCH HAZARD AREA COORDINATES (Figure 2)

19° 55.699'S 148° 05.955'E

19° 51.352'S 148° 14.318'E

19° 54.462'E 148° 20.009'E

19° 57.856'S 148° 13.483'E thence along the mean high-water mark to 19° 55.699'S 148° 05.955'E

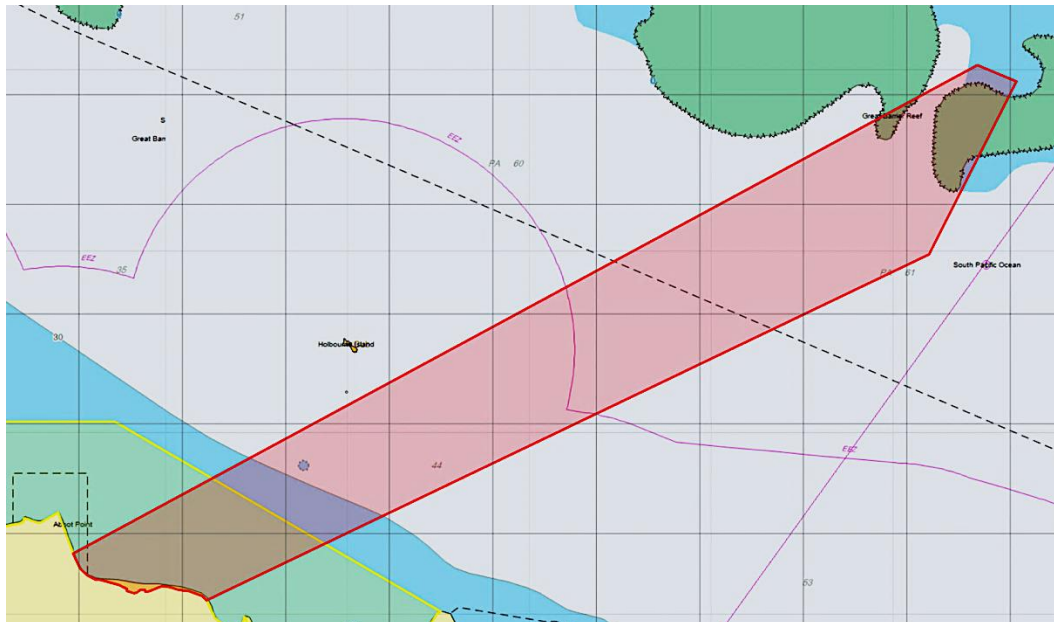


Figure 2

## MISSION 001: TESTFLIGHT 1

# PUBLIC INFORMATION ON VIEWING AND SAFETY

The information contained in this document is current as of **5 May 2025**. For the latest information, please check our website: <https://www.gspace.com/missions>

## HAZARD AREAS

### 2. MARINE ACCESS (Con't)

MARINE LAUNCH HAZARD AREA COORDINATES – Australian Territorial Sea and GBRMP Waters (Figure 3)

19° 20.970' S 149° 14.701' E  
 18° 42.215' S 150° 20.701' E  
 18° 44.272' S 150° 29.931' E  
 18° 51.667' S 150° 25.371' E  
 19° 23.527' S 149° 16.703' E

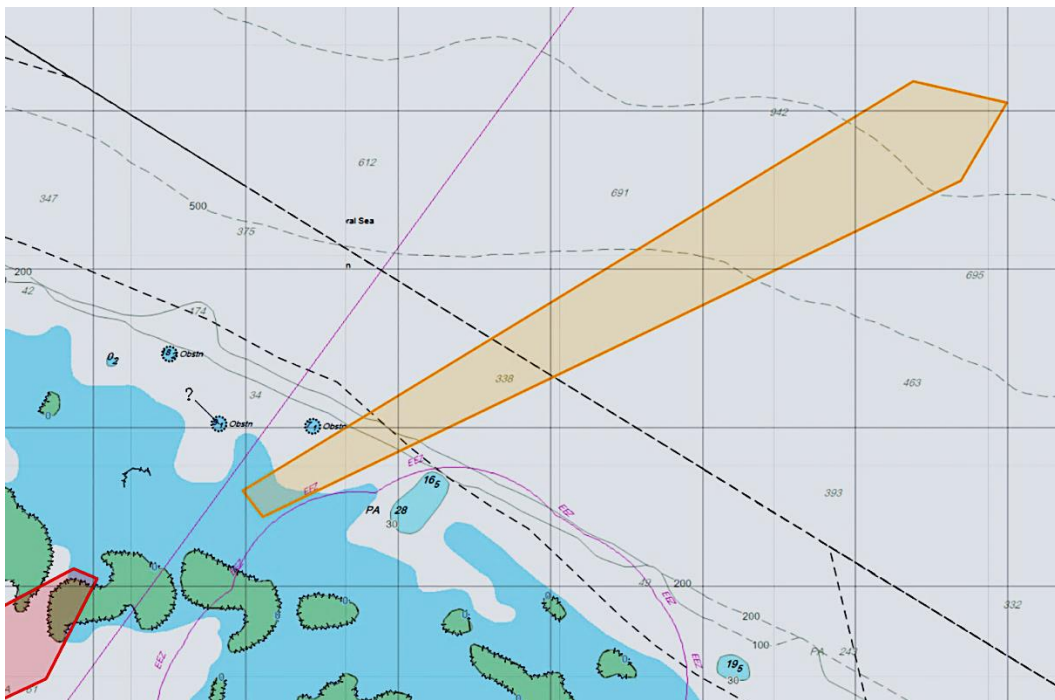


Figure 3



## MISSION 001: TESTFLIGHT 1

# PUBLIC INFORMATION ON VIEWING AND SAFETY

The information contained in this document is current as of **5 May 2025**. For the latest information, please check our website: <https://www.gspace.com/missions>

## HAZARD AREAS

### 3. AIR ACCESS

To facilitate the safety of air navigation during launch activities, **Temporary Restricted and Danger Areas will be declared for Airspace surrounding the launch area and along the rocket flightpath**, depicted in Figures 4, 5 and 6.

- The exact dates and times the Restricted and Danger Areas become active will be communicated via Notice to Airmen (NOTAM), with radio broadcasts made during NOTAM activation periods on applicable Aviation VHF frequencies (callsign "Gilmour Space").
- Restricted and Danger Areas will be in place for a small area over the launch site for up to 18 hours before launch and for the corridor along the launch trajectory **around 30 minutes before launch**.
- **Temporary Restricted and Danger Areas are also applicable to Drones.** The use of drones in this area is strictly prohibited.

TRA FILLING COORDINATES (Figure 4)

Within 2NM radius of PSN 19 57 28S 148 06 46E  
SFC – 5000FT AMSL

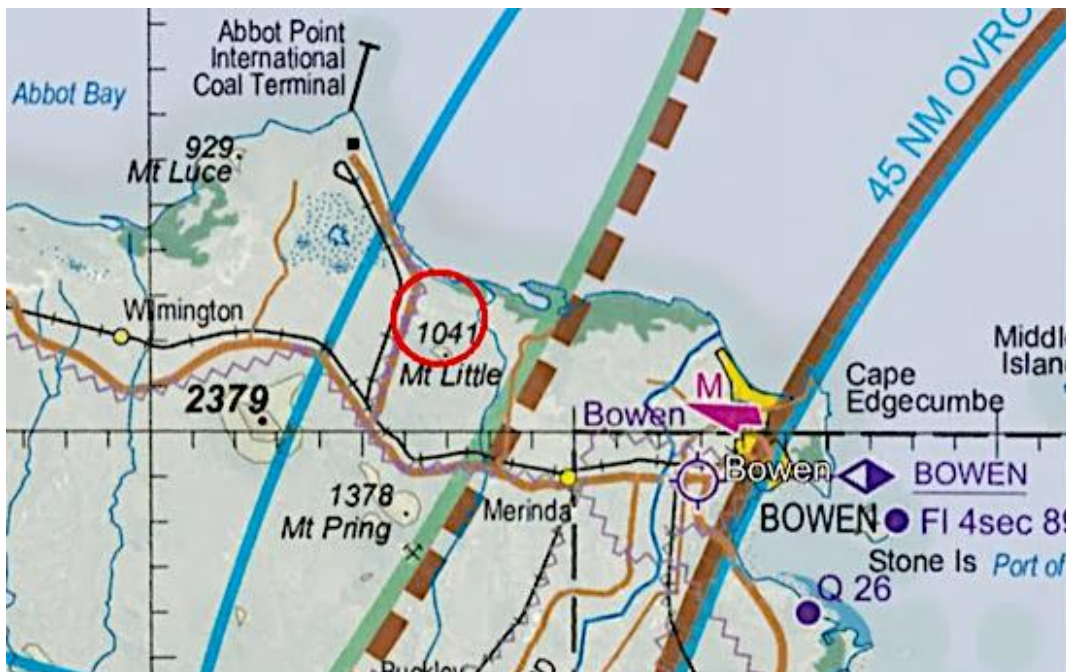


Figure 4

## MISSION 001: TESTFLIGHT 1

# PUBLIC INFORMATION ON VIEWING AND SAFETY

The information contained in this document is current as of **5 May 2025**. For the latest information, please check our website:  
<https://www.gspace.com/missions>

## HAZARD AREAS

### 3. AIR ACCESS (Con't)

TRA LAUNCH COORDINATES (Figure 5)

195940S 1480049E – 195618S 1480128E – 195448S 1480219E – 194721S 1480735E – 193118S  
 1482031E – 194713S 1483415E – 194900S 1484035E – 195042S 1485657E – 200043S 1482449E –  
 200301S 1481526E – 200231S 1480545E – 200153S 1480224E – 195940S 1480049E

VERTICAL LIMITS: SFC - UNL  
 HOURS OF ACTIVITY: NOTAM



Figure 5

## MISSION 001: TESTFLIGHT 1

# PUBLIC INFORMATION ON VIEWING AND SAFETY

The information contained in this document is current as of **5 May 2025**. For the latest information, please check our website:  
<https://www.gspace.com/missions>

## HAZARD AREAS

### 3. AIR ACCESS (Con't)

TDA STAGE 1 COORDINATES (Figure 6)

193118S 1482031E – 185732S 1484620E – 180713S 1501907E – 191317S 1505639E – 195620S  
 1493429E – 195042S 1485657E – 194900S 1484035E – 194713S 1483415E – 193118S 1482031E

VERTICAL LIMITS: SFC – UNL

HOURS OF ACTIVITY: NOTAM

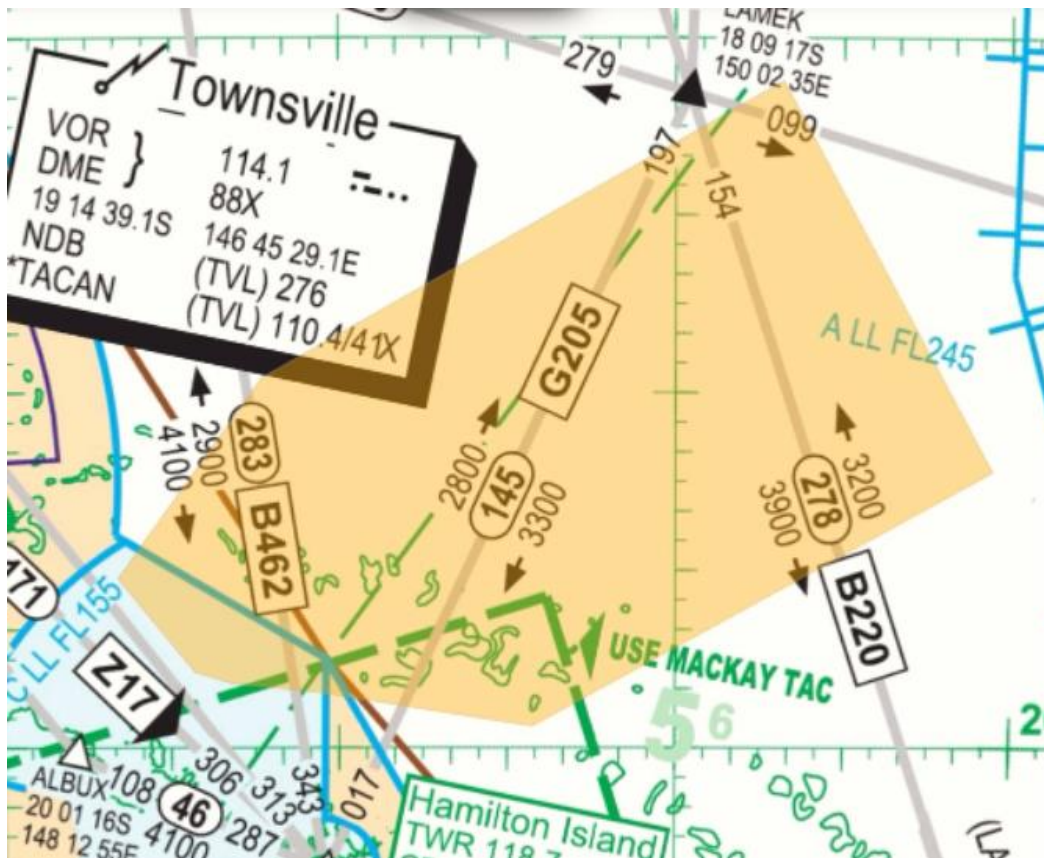


Figure 6